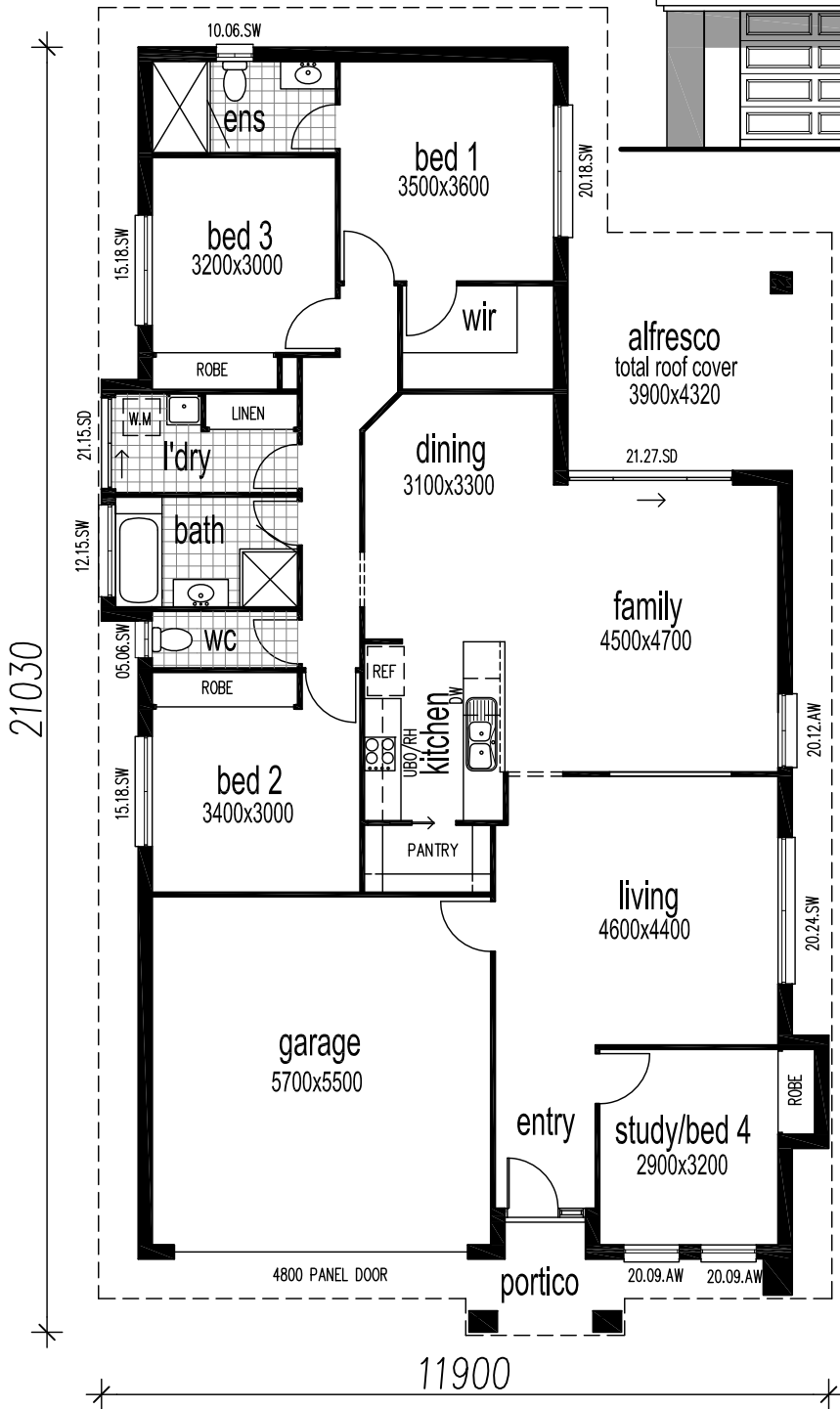


# Facade & Floor Plan

## PINE SERIES



### PINE 22

Floor Area 205.1 m<sup>2</sup> or 22.0 sq.  
(includes portico and alfresco)



THESE PLANS ARE THE COPYRIGHT OF HOUSE AND LAND DESIGN P/L

Pacific Pines  
Telephone: (07) 5501 3000

Highland Reserve  
Telephone (07) 5502 6816

www.hald.com.au  
info@hald.com.au

"Building on  
your land or ours"

# House and Land Design Pty Ltd

*“Building on Your Land or Ours”*

QBSA Licence 728 208 NSW Licence 163594C

**ECONOMY INCLUSIONS (On Your Land) \$150,530**

- As the name suggests...a reduced range of fittings & fixtures
- See your sales consultant for more information

**STANDARD INCLUSIONS (On Your Land) \$158,900**

- Stainless steel oven, hotplate & rangehood
- Overhead cupboards \* Melamine shelving to walk-in pantry
- R2.5 ceiling batts (excludes garage)
- All council building fees \* Granitgard termite barrier
- Fixtures as displayed at 57 Laughlen Chase
- Ceramic floor tiling to ensuite, bathroom, toilet and laundry
- Housing Industry Association fixed price building contract
- Termite resistant pine framing with 25 year structural guarantee
- 5000L Water tank as required by Gold Coast City Council

## EXCLUSIONS

- Site preparation \* Retaining walls \* Landscaping \* Fencing
- Dishwasher \* Window coverings \* Light fittings \* Carpet
- Main floor tiling \* Driveway and path \* Alfresco floor
- TV antenna \* Letterbox \* Clothesline \* Flyscreens and security screens \* Remote control to garage door \* Security alarm
- Air conditioner

**MOVE-IN INCLUSIONS (Standard Inclusions plus) \$196,430**

- Carpets \* Main floor tiling \* Concrete driveway with path
- Fully fenced block \* Fully turfed block \* Clothesline
- Security screens to all external doors \* Flyscreens to windows
- Remote control to garage door \* Light fittings \* Letterbox
- Alfresco paved floor \* TV antenna \* Dishwasher
- Vertical/Venetian blinds to all windows (excludes garage)

## EXCLUSIONS

- Site preparation \* Retaining walls \* Security alarm
- Air conditioner \* Shrubs and garden beds (ie turf only)